

Current Influenza Activity

San Joaquin County

- As of 1/16/10, there were a total of 220 hospitalized cases of 2009 H1N1 influenza reported in SJC. This includes 59 ICU cases and 14 fatal cases of 2009 H1N1 influenza.

California

- In CA, 2009 H1N1 influenza activity has been down-graded from “local” to “sporadic” this week. Most indicators suggest that illness continues to decline, with levels of illness at or slightly below the usual range for this time of year.
- As of 1/16/10, there have been 8,535 hospitalizations and/or fatal cases of 2009 H1N1 influenza reported to CDPH. Of these cases, 1,797 cases required intensive care. A total of 491 deaths due to 2009 H1N1 influenza have been reported to CDPH.
- The statewide cumulative incidence rate of reported 2009 H1N1 influenza hospitalizations and/or fatalities is 22.1 per 100,000 population.
- Using the estimation approach reported by the CDC, it is estimated that the total number of 2009 H1N1 infections among Californians from April through the first week of January was approximately 5 million.

Table 1. Respiratory Laboratory Network (RLN)* Influenza PCR Surveillance Results, Week 2 (Jan. 10 – Jan. 16, 2010)

	Total Flu A Tested	Flu A (% of total)	Seasonal H1 (% of Flu A)	Seasonal H3 (% of Flu A)	Unsubtype-able** (% of Flu A)
All RLN	321	35 (11%)	0 (0%)	0 (0%)	35 (100%)
Northern	174	16 (9%)	0 (0%)	0 (0%)	16 (100%)
Central	86	8 (9%)	0 (0%)	0 (0%)	8 (100%)
Southern	61	11 (18%)	0 (0%)	0 (0%)	11 (100%)

*16 RLN laboratories reporting, including:
Northern CA: Contra Costa, El Dorado, Marin, Monterey, Santa Clara, Shasta, Sonoma
Central CA: Fresno, San Joaquin, Tulare
Southern CA: Long Beach, Orange, Riverside, San Luis Obispo, Santa Barbara, Ventura

**At this time, Unsubtypeable Flu A is presumed to be H1N1

United States / Worldwide

- In the U.S., the proportion of visits to doctors for influenza-like illness (ILI) decreased to 1.9%, just below the national baseline level (2.3%). Nationally, 7.3% of deaths were attributed to pneumonia and influenza (P&I), just below the epidemic threshold (7.6%).
- A recent Morbidity and Mortality Weekly Report (MMWR) from the CDC reported that, as of January 2, overall 2009 H1N1 vaccination coverage for the 2009-10 influenza season is estimated to be 20.3 percent of the U.S. population.
- CDC reported that overall flu activity continued to decrease in the United States. No states reported widespread flu activity and 9 states reported regional flu activity (a decrease of 3 states from last week).

Figure 1. Percent of clinic visits due to ILI in Stockton Unified schools by disease week, 2006-2010.***

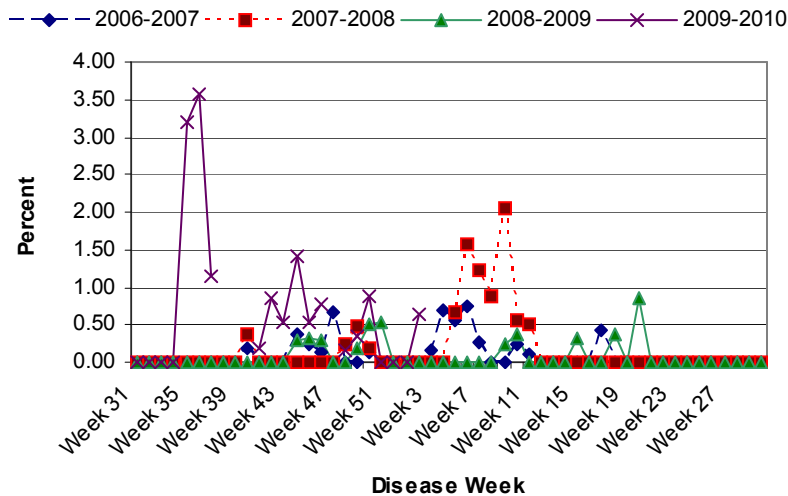
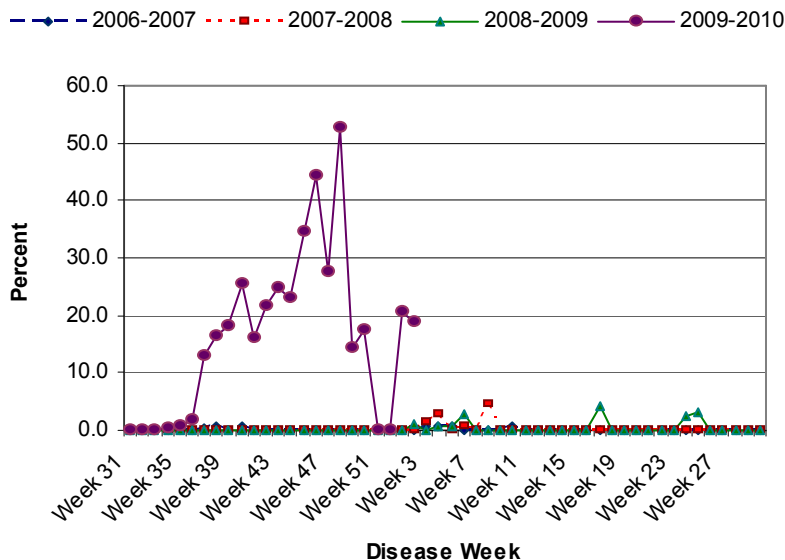


Figure 2. Stockton sentinel provider ILI rates by disease week, 2006-2010.****



*** Stockton Unified schools were on holiday break during Week 47 (11/22/09 - 11/28/09) and Weeks 51 and 52 (12/20/09 - 1/2/10).

**** No Stockton sentinel provider data available for Weeks 51 and 52 (12/20/09-1/2/10).