

**Current Influenza Activity**

**San Joaquin County**

- As of 1/23/10, there were a total of 223 hospitalized cases of 2009 H1N1 influenza reported in SJC. This includes 60 ICU cases and 16 fatal cases of 2009 H1N1 influenza. No new fatalities occurred during this reporting period. All fatalities were from 2009 but some deaths were recently reported to PHS.

**California**

- In CA, 2009 H1N1 influenza activity remains “sporadic” this week. Reports of ILI from sentinel providers decreased. Laboratory detections of influenza declined while detections of respiratory syncytial virus (RSV) continued to increase.
- As of 1/23/10, there have been 8,589 hospitalizations and/or fatal cases of 2009 H1N1 influenza reported to CDPH. Of these cases, 1,815 cases required intensive care. A total of 498 deaths due to 2009 H1N1 influenza have been reported to CDPH.
- Individuals aged 50-64 years have the highest case-fatality ratio (10.0%) and the second-highest case-fatality ratio is among individuals 36-49 years (9.9%). The case-fatality ratio for all ages combined is 5.8%.

**Table 1.** Respiratory Laboratory Network (RLN)\* Influenza PCR Surveillance Results, Week 3 (Jan. 17 – Jan. 23, 2010)

	Total Flu A Tested	Flu A (% of total)	Seasonal H1 (% of Flu A)	Seasonal H3 (% of Flu A)	Unsubtype-able** (% of Flu A)
All RLN	318	13 (4%)	0 (0%)	0 (0%)	11 (85%)
Northern	181	4 (2%)	0 (0%)	0 (0%)	3 (75%)
Central	61	3 (5%)	0 (0%)	0 (0%)	2 (67%)
Southern	76	6 (8%)	0 (0%)	0 (0%)	6 (100%)

\*19 RLN laboratories reporting, including:  
 Northern CA: Contra Costa, El Dorado, Marin, Monterey, Sacramento, San Francisco, San Mateo, Santa Clara, Shasta, Sonoma  
 Central CA: Fresno, San Joaquin, Tulare  
 Southern CA: Los Angeles, Long Beach, Orange, San Luis Obispo, Santa Barbara, Ventura

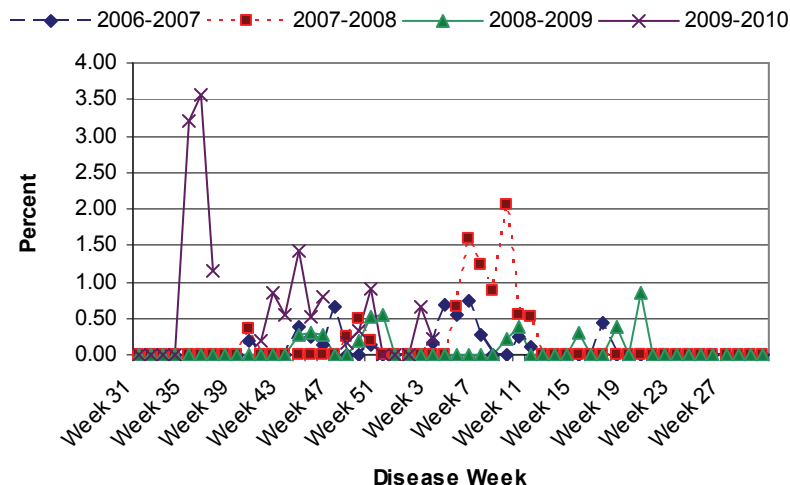
\*\*At this time, Unsubtypeable Flu A is presumed to be H1N1

**United States**

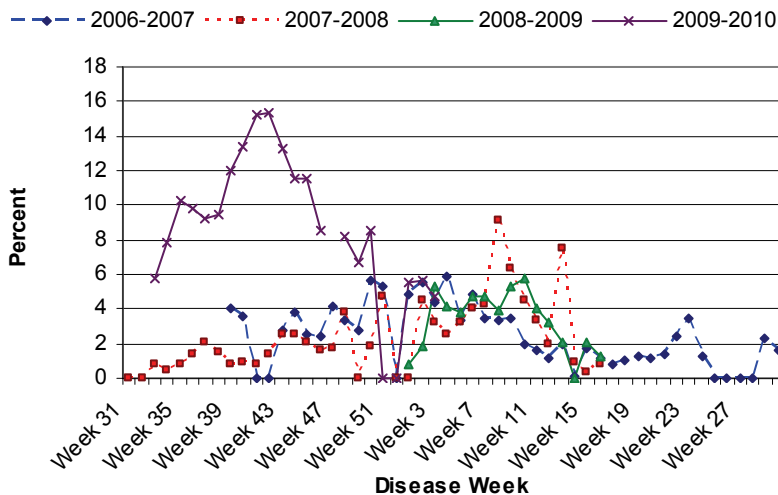
- In the US, the proportion of visits to doctors for influenza-like illness (ILI) decreased to 1.8%, below the national baseline level (2.3%). Nationally, 8.0% of deaths were attributed to pneumonia and influenza (P&I), just above the epidemic threshold (7.6%).
- In the US, 98% of subtyped Influenza A viruses reported were identified as 2009 H1N1 influenza to date. These viruses remain similar to the virus chosen for the 2009 H1N1 vaccine, and remain susceptible to the antiviral drugs oseltamivir and zanamivir with rare exception<sup>^</sup>.

<sup>^</sup> Since April 2009, 54 cases of oseltamivir resistance have been found in the United States, with one new case during the last week.

**Figure 1.** Percent of clinic visits due to ILI in Stockton Unified schools by disease week, 2006-2010.\*\*\*



**Figure 2.** Percent of school absences due to ILI by disease week, Manteca Unified School District, 2006-2010.\*\*\*\*



\*\*\* Stockton Unified schools were on holiday break during Week 47 (11/22/09 - 11/28/09) and Weeks 51 and 52 (12/20/09 -1/2/10).

\*\*\*\* Manteca Unified school were on holiday break during Week 47 (11/22/09- 11/28/09) and Weeks 51 and 52 (12/20/09-1/2/10).