

Current Influenza Activity

San Joaquin County

- As of 12/5/09, there were a total of 194 hospitalized cases of 2009 H1N1 influenza reported in SJC. This includes 49 ICU cases and 13 fatal cases of 2009 H1N1 influenza.

California

- In CA, 2009 H1N1 influenza continues to be widespread. Most indicators suggest that illness may be leveling off; however, levels of illness remain above normal for this time of year.
- Reported cases of new hospitalizations decreased from 794 cases last week to 278 cases this week.
- As of 12/5/09, there have been 7,546 hospitalizations and/or fatal cases of 2009 H1N1 influenza reported to CDPH. Of these cases, 1,442 cases required intensive care. A total of 397 deaths due to 2009 H1N1 influenza have been reported to CDPH.
- Using the estimation approach reported by CDC, CDPH calculated the total number of 2009 H1N1 infections among Californians to be approximately 4.3 million (11.6% of the population) from April through the first week of December.
- Laboratory detections of respiratory syncytial virus (RSV) are increasing, which is typical for this time of year.

Table 1. Respiratory Laboratory Network (RLN)* Influenza PCR Surveillance Results, Week 48 (Nov. 29 – Dec. 5, 2009)

	Total Flu A Tested	Flu A (% of total)	Seasonal H1 (% of Flu A)	Seasonal H3 (% of Flu A)	Unsubtype-able** (% of Flu A)
All RLN	613	116 (19%)	0 (0%)	0 (0%)	109 (94%)
Northern	234	48 (21%)	7 (14.6%)	0 (0%)	41 (85.4%)
Central	262	36 (14%)	0 (0%)	0 (0%)	36 (100%)
Southern	117	32 (27%)	0 (0%)	0 (0%)	32 (100%)

*15 RLN Public Health Laboratories reporting, including:
 Northern CA: Contra Costa, Marin, Monterey, Sacramento, San Francisco, Shasta, San Mateo, Sonoma
 Central CA: Fresno, San Joaquin, Tulare
 Southern CA: Long Beach, Los Angeles, Riverside, San Luis Obispo

**At this time, Unsubtypeable Flu A is presumed to be H1N1

United States / Worldwide

- After analyzing data for the weeks from October 18 through November 14, the Centers for Disease Control and Prevention (CDC) estimated that 47 million people, or about 15% of the population, have been infected with 2009 H1N1 influenza. The estimated death toll of 9,820 remains well below the estimated seasonal flu toll of 36,000, though children and young adults make up about 87% (8,540) of that total, the opposite of what is seen with seasonal flu.
- The risk of illness, hospitalization and death related to 2009 H1N1 influenza is very different from seasonal influenza. With seasonal influenza, about 60% of flu-related hospitalizations and 90% of flu-related deaths occur in people 65 years and older. With 2009 H1N1 influenza, however, less than 10% of hospitalizations and approximately 13% of deaths occur in people 65 years and older.

Figure 1. Percent of clinic visits due to ILI in Stockton Unified schools by disease week, 2006-2009.***

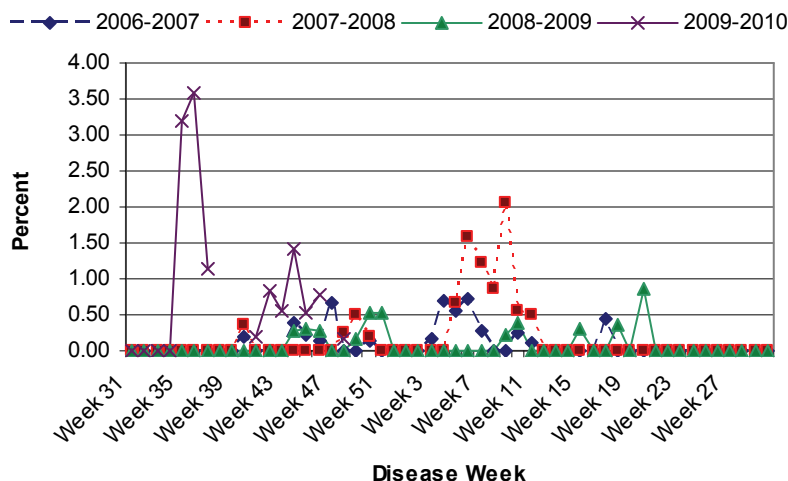
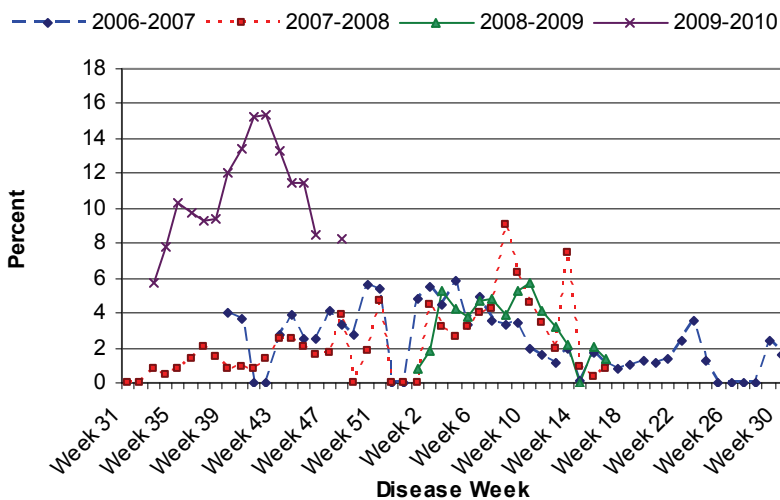


Figure 2. Percent of school absences due to ILI by disease week, Manteca Unified School District, 2006-2009.***



***Stockton and Manteca Unified schools were on holiday break during Week 47 (11/22/09—11/28/09).