

**Current Influenza Activity**

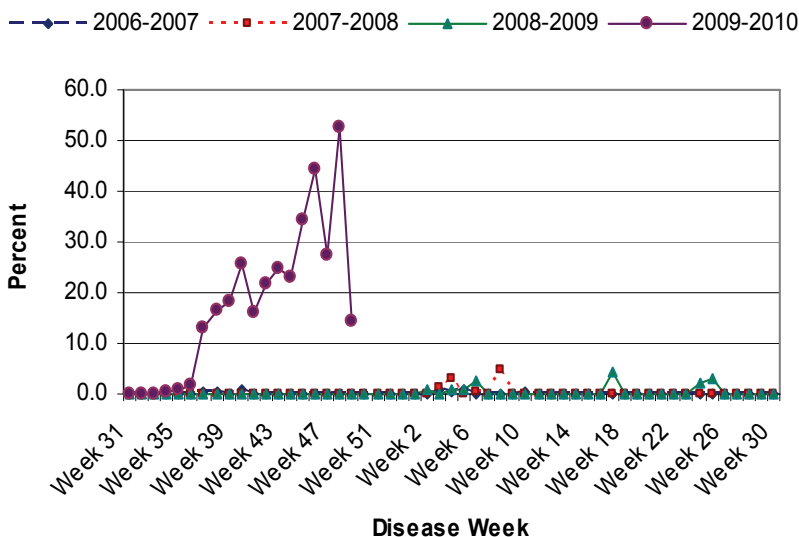
**San Joaquin County**

- As of 12/12/09, there were a total of 206 hospitalized cases of 2009 H1N1 influenza reported in SJC. This includes 55 ICU cases and 13 fatal cases of 2009 H1N1 influenza.

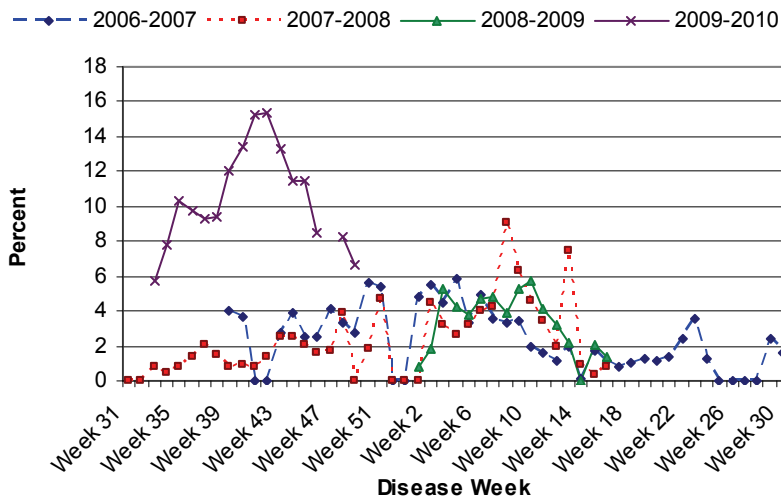
**California**

- In CA, 2009 H1N1 influenza continues to be widespread, although most indicators suggest that illness may be leveling off.
- A total of 248 new cases were reported to the CA Dept. of Public Health (CDPH) this week, 103 of which were from 12/6/09-12/12/09 and 145 of which were delayed reports from prior to 12/6/09.
- As of 12/12/09, there have been 7,794 hospitalizations and/or fatal cases of 2009 H1N1 influenza reported to CDPH. Of these cases, 1,507 cases required intensive care. A total of 417 deaths due to 2009 H1N1 influenza have been reported to CDPH.
- This week, the CA Viral and Rickettsial Disease Laboratory (VRDL) identified a case of oseltamivir resistance in a resident of San Luis Obispo County. A total of 4 cases of oseltamivir resistance have been identified in CA residents. All cases were in immunosuppressed individuals.

**Figure 1. Stockton sentinel provider ILI rates by disease week, 2006-2009.**



**Figure 2. Percent of school absences due to ILI by disease week, Manteca Unified School District, 2006-2009.\*\*\***



\*\*\*Manteca Unified schools were on holiday break during Week 47 (11/22/09—11/28/09).

**Table 1. Respiratory Laboratory Network (RLN)\* Influenza PCR Surveillance Results, Week 49 (Dec. 6 – Dec. 12, 2009)**

	Total Flu A Tested	Flu A (% of total)	Seasonal H1 (% of Flu A)	Seasonal H3 (% of Flu A)	Unsubtype-able** (% of Flu A)
<b>All RLN</b>	<b>684</b>	<b>152 (22%)</b>	<b>0 (0%)</b>	<b>1 (0.7%)</b>	<b>142 (93.4%)</b>
Northern	283	49 (17%)	0 (0%)	0 (0%)	44 (89.8%)
Central	230	67 (29%)	0 (0%)	0 (0%)	67 (100%)
Southern	171	36 (21%)	0 (0%)	1 (2.8%)	31 (86.1%)

\*16 RLN Public Health Laboratories reporting, including:  
 Northern CA: Contra Costa, El Dorado, Monterey, Sacramento, Shasta, Santa Clara, San Francisco, Sonoma  
 Central CA: Fresno, San Joaquin, Tulare  
 Southern CA: Long Beach, Los Angeles, Orange, San Luis Obispo, Santa Barbara

\*\*At this time, Unsubtypeable Flu A is presumed to be H1N1

**United States**

- According to the Centers for Disease Control and Prevention (CDC), flu activity in the United States dropped further this week, as only 11 states reported widespread flu activity, down from 14 states during Week 48 and 25 states during Week 47.
- A survey by scientists at the RAND Corporation showed that approximately the same percentage of Americans were vaccinated against seasonal influenza this year as received vaccine last year, undercutting perceptions of extraordinary demand driven by pandemic-fueled awareness. The research found that by mid-November 2009, 32% of adults had been vaccinated against seasonal flu, compared with 30% of adults at the same point in 2008. However, the survey also showed that people began to seek vaccination much earlier this year, with 3 times as many people vaccinated in September than in 2008, a more typical year when relatively little seasonal vaccine was available that early. The full survey results can be found at [http://www.rand.org/pubs/occasional\\_papers/2009/RAND\\_OP289.pdf](http://www.rand.org/pubs/occasional_papers/2009/RAND_OP289.pdf).