

San Joaquin County

- As of 4/3/10, there were a total of 224 hospitalized cases of 2009 H1N1 influenza reported in SJC. This includes 61 ICU cases and 16 fatal cases of 2009 H1N1 influenza.
- Since January 2010, there have only been 6 new hospitalized cases of 2009 H1N1 influenza reported to SJC Public Health Services.

California & United States

- As of 4/3/10, there have been 8,917 hospitalizations and/or fatal cases of 2009 H1N1 influenza reported to CDPH. Of these cases, 1,984 cases required intensive care. A total of 578 deaths due to 2009 H1N1 influenza have been reported to CDPH.
- Reports of influenza like illness (ILI) from sentinel providers decreased from last week. Influenza detections by sentinel labs have remained low for the last several reporting periods.
- During Week 13, 13% of specimens submitted to sentinel laboratories and RLN were positive for respiratory syncytial virus (RSV); 19% were positive during Week 12.
- During Week 13, 11% of specimens tested were positive for other respiratory viruses, which is a decrease of 19% from the previous week. Of those that tested positive for other respiratory viruses, 3% were human metapneumovirus and 5% were rhinovirus.
- Although flu activity remains relatively low in California and nationally, the Southeast United States is experiencing continued regional activity, according to the Centers for Disease Control (CDC) Week 13 FluView. Most flu continues to be 2009 H1N1.
- Flu activity, caused by either 2009 H1N1 or seasonal viruses, may rise and fall, but is expected to continue for weeks in the U.S.

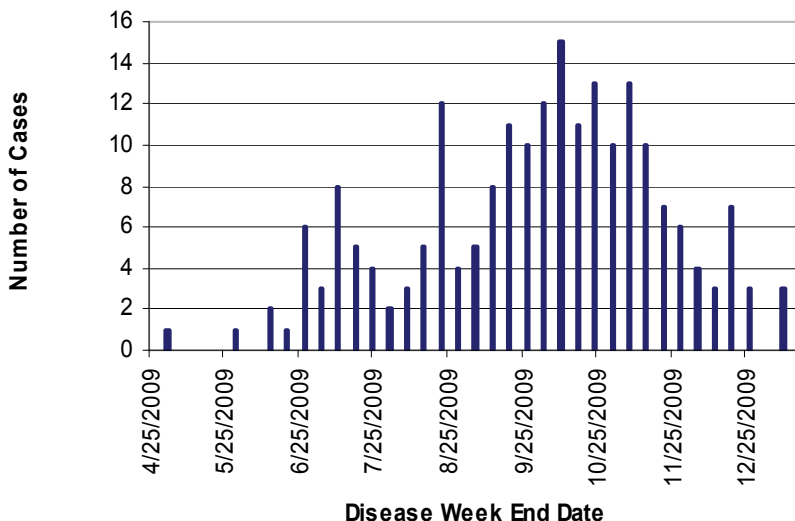
Table 1. Respiratory Laboratory Network (RLN)* Influenza PCR Surveillance Results, Week 9 (Feb. 28 – Mar. 6, 2010)

	Flu A (% of total, N)	Unsubtype-able** (% of Flu A)	H1 & H3 (% of Flu A)	RSV (% of total, N)
All RLN	1 (2%, 54)	1 (100%)	0 (0%)	0 (0%, 3)
Northern	1 (5%, 22)	1 (100%)	0 (0%)	0 (0%, 0)
Central	0 (0%, 11)	0 (0%)	0 (0%)	0 (0%, 3)
Southern	0 (0%, 21)	0 (0%)	0 (0%)	0 (0%, 0)

*17 RLN laboratories reporting, including:
Northern CA: Contra Costa, El Dorado, Placer, Sacramento, San Francisco, San Mateo, Santa Clara, Shasta, Sonoma
Central CA: Fresno, Monterey, San Joaquin, Tulare
Southern CA: Long Beach, Orange, San Luis Obispo, Santa Barbara

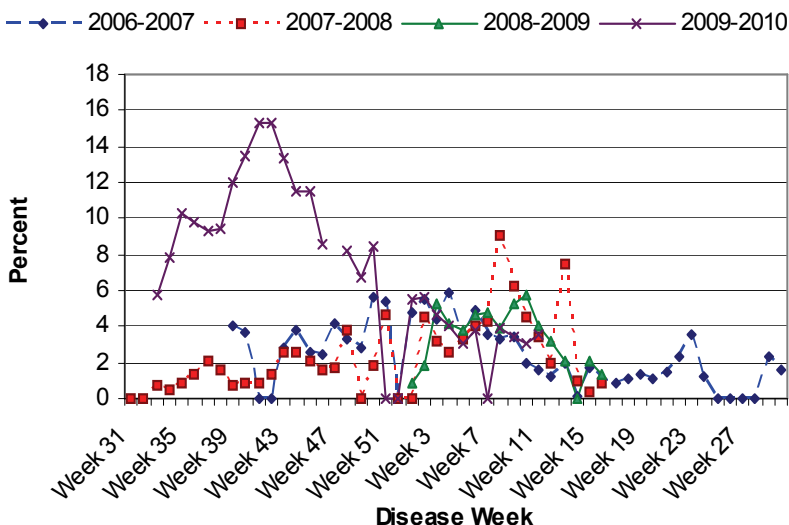
**Unsubtypeable Flu A is presumed to be H1N1

Figure 1. Weekly number of hospitalizations due to 2009 H1N1 influenza, San Joaquin County, 4/19/09 - 3/13/10 (n=215).***



*** Date of hospitalization determined by the lab specimen collection date.

Figure 2. Percent of school absences due to ILI by disease week, Manteca Unified School District, 2006-2010.***



**** Manteca Unified schools were on holiday break during Week 47 (11/22/09-11/28/09), Weeks 51 and 52 (12/20/09-1/2/10), Week 7 (2/14/10-2/20/10) and Week 13 (3/28/10-4/3/10).