

San Joaquin County

- Since January 2010, there have only been 6 new hospitalized cases of 2009 H1N1 influenza reported to SJC Public Health Services.
- Influenza activity in San Joaquin County has been very low since March 2010. Sentinel providers have reported minimal influenza like illness (ILI) although surveillance is ongoing.

California, United States & Global Influenza Activity

- Since March 2010, influenza activity in California has remained “sporadic,” with declining reports of ILI and little evidence of circulating 2009 H1N1 virus. However, 2009 H1N1 influenza continues to circulate in parts of the United States and it is anticipated that the virus will cause disease in the 2010-2011 influenza season.
- The American College Health Association (ACHA) said that ILI at colleges is down from the already low levels reported the week before. A total of 192 new ILI cases were reported for the week ending April 24, which is 3% of the number reported during the pandemic's peak. There were no hospitalizations or deaths. The nationwide attack rate was just 0.9 cases per 10,000 students, down from 1.1 the week before. Among 182 campuses, 34% reported cases, down from 38%.
- According to the World Health Organization (WHO), circulation of the 2009 H1N1 pandemic virus persists only in tropical zones of the Americas, Africa, and Southeast Asia. Strains of seasonal flu B are circulating in East Asia, along with sporadic seasonal A/H3N2 flu in Asia, Eastern Europe, and Eastern Africa; the most recent H3N2 reports were in Indonesia and Tanzania. A few seasonal H1N1 viruses, not the pandemic strain, were recorded last week in the Russian Federation and Northern China.

Table 1. Respiratory Laboratory Network (RLN)* Influenza PCR Surveillance Results, Week 15 (Apr. 11 – Apr. 17, 2010)

	Flu A (% of total, N)	Unsubtype-able** (% of Flu A)	H1 & H3 (% of Flu A)	Flu B (% of total, N)
All RLN	2 (3%, 58)	2 (100%)	0 (0%)	0 (0%, 58)
Northern	0 (0%, 26)	0 (0%)	0 (0%)	0 (0%, 26)
Central	1 (5%, 21)	1 (100%)	0 (0%)	0 (0%, 21)
Southern	1 (9%, 11)	1 (100%)	0 (0%)	0 (0%, 11)

*17 RLN laboratories reporting, including:
 Northern CA: Contra Costa, El Dorado, Placer, Sacramento, San Francisco, San Mateo, Santa Clara, Shasta, Sonoma
 Central CA: Fresno, Monterey, San Joaquin, Tulare
 Southern CA: Long Beach, Orange, San Luis Obispo, Santa Barbara

**Unsubtypeable Flu A is presumed to be H1N1

Figure 1. Percent of clinic visits due to ILI in Stockton Unified schools by disease week, 2006-2010.***

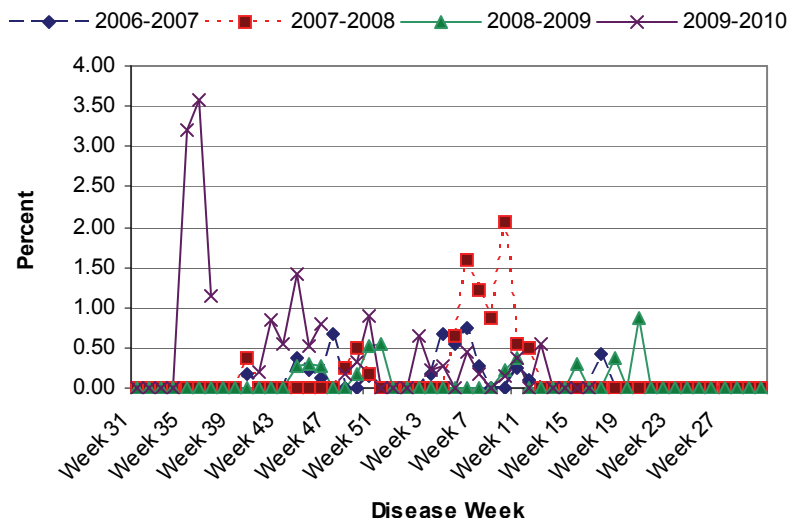
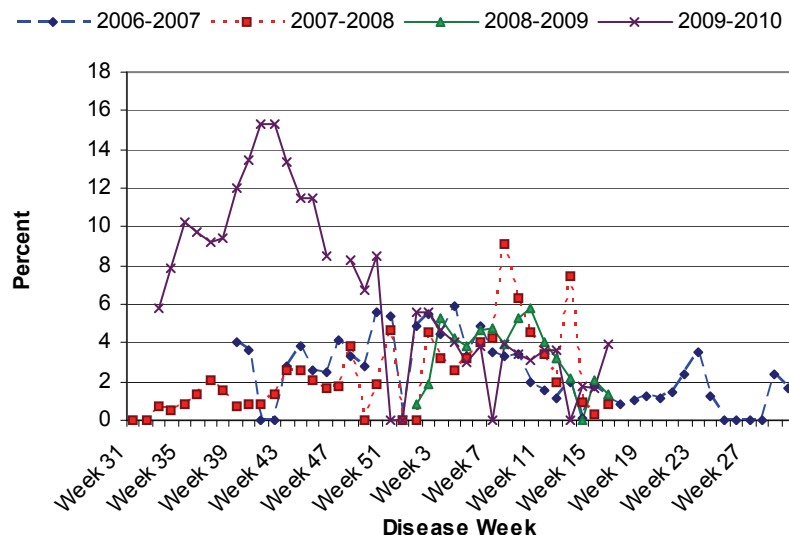


Figure 2. Percent of school absences due to ILI by disease week, Manteca Unified School District, 2006-2010.****



***Stockton Unified schools were on holiday break during Week 47 (11/22/09 - 11/28/09), Weeks 51 and 52 (12/20/09 - 1/2/10) and Week 13 (3/28/10-4/3/10).

**** Manteca Unified schools were on holiday break during Week 47 (11/22/09 - 11/28/09), Weeks 51 and 52 (12/20/09-1/2/10), Week 7 (2/14/10-2/20/10) and Week 13 (3/28/10-4/3/10).