

San Joaquin County

- As of 3/13/10, there were a total of 224 hospitalized cases of 2009 H1N1 influenza reported in SJC. This includes 61 ICU cases and 16 fatal cases of 2009 H1N1 influenza.
- Since January 2010, there have only been 6 new hospitalized cases of 2009 H1N1 influenza reported to SJC Public Health Services.

California

- As of 3/13/10, there have been 8,837 hospitalizations and/or fatal cases of 2009 H1N1 influenza reported to CDPH. Of these cases, 1,937 cases required intensive care. A total of 553 deaths due to 2009 H1N1 influenza have been reported to CDPH.
- Most indicators suggest that influenza like illness continue to decline, with levels of illness below the usual range for this time of year.
- Reports from ILI sentinel providers continue to decline. After increasing for 4 weeks, Kaiser hospitalizations for pneumonia and influenza (P&I) decreased this week in northern California.
- During Week 9, none of the specimens received by the Respiratory Lab Network (RLN) were positive for influenza. In Week 8, however, 2% of specimens were positive for influenza.
- During Week 10, 31% of specimens submitted to sentinel laboratories and RLN were positive for respiratory syncytial virus (RSV); 29% were positive during Week 9.
- During Week 10, 20% of specimens tested were positive for other respiratory viruses, which is an increase of 5% from the previous week. Of those that tested positive for other respiratory viruses, 66% were human metapneumovirus and 32% were rhinovirus.

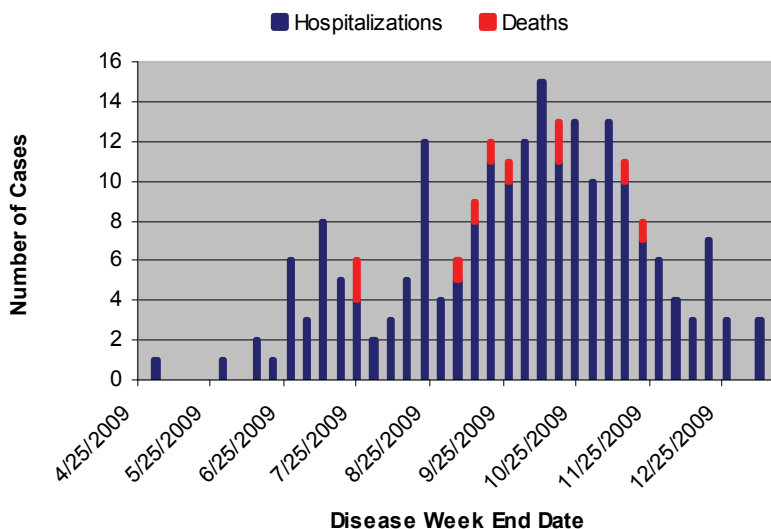
Table 1. Respiratory Laboratory Network (RLN)* Influenza PCR Surveillance Results, Week 9 (Feb. 28 – Mar. 6, 2010)

	Flu A (% of total, N)	Unsubtype-able** (% of Flu A)	H1 & H3 (% of Flu A)	RSV (% of total, N)
All RLN	0 (0%, 181)	0 (0%)	0 (0%)	4 (31%, 13)
Northern	0 (0%, 121)	0 (0%)	0 (0%)	0 (0%, 4)
Central	0 (0%, 36)	0 (0%)	0 (0%)	4 (9%, 44)
Southern	0 (0%, 24)	0 (0%)	0 (0%)	0 (0%, 0)

*18 RLN laboratories reporting, including:
Northern CA: Contra Costa, El Dorado, Marin, Placer, Sacramento, San Francisco, San Mateo, Santa Clara, Shasta, Sonoma
Central CA: Fresno, Fresno, Monterey, San Joaquin, Tulare
Southern CA: Long Beach, Orange, Riverside, San Luis Obispo

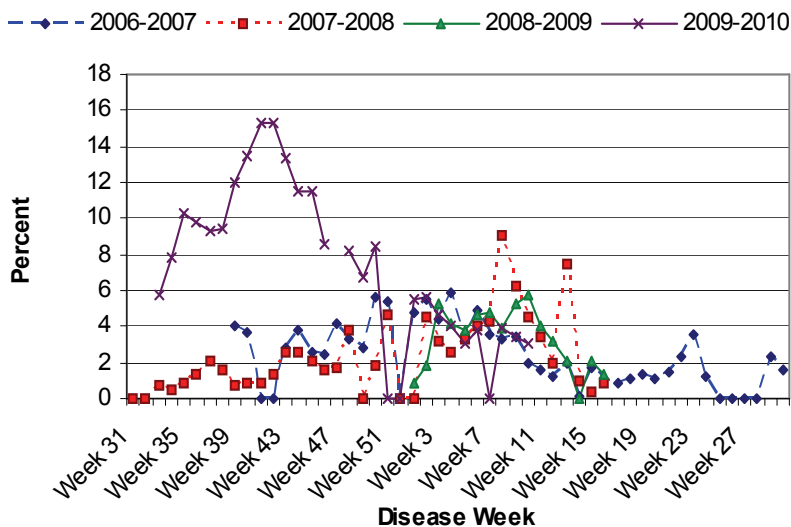
**Unsubtypeable Flu A is presumed to be H1N1

Figure 1. Weekly number of hospitalizations and deaths due to 2009 H1N1 influenza, San Joaquin County, 4/19/09 - 3/13/10 (n=231).***



*** Date of hospitalization determined by the lab specimen collection date.

Figure 2. Percent of school absences due to ILI by disease week, Manteca Unified School District, 2006-2010.***



**** Manteca Unified schools were on holiday break during Week 47 (11/22/09-11/28/09), Weeks 51 and 52 (12/20/09-1/2/10), and Week 7 (2/14/10-2/20/10).