

Current Influenza Activity

San Joaquin County

- This week marks the beginning of the official flu season. Reported levels of influenza continue to be elevated above seasonal baseline and widespread in the community.
- Currently, the only available pandemic (H1N1) 2009 influenza vaccine is the live attenuated influenza virus (LAIV) or "live" intranasal spray. Inactivated injectable formulations (shots) should be available within the next few weeks.

California

Changes to influenza reporting

- In accordance with Title 17, CA code of regulations §2500 and §2502, **probable or confirmed* hospitalized and fatal cases of pandemic (H1N1) 2009 influenza** are now considered reportable as an occurrence of unusual disease.
- In order to monitor pandemic (H1N1) 2009 influenza activity in relation to seasonal influenza, the state requests that **all other lab-confirmed hospitalized and fatal cases of influenza** be reported as well. These include:
 - influenza A only by any laboratory method (e.g. rapid test, culture, PCR, etc.), with no further subtyping done
 - influenza A-positive specimens subtyped as human seasonal H1, H3 or pandemic (H1N1) 2009
 - influenza B-positive specimens

*Individuals who are positive for influenza A by PCR and negative for human subtypes H1 and H3 are considered probable pandemic (H1N1) cases. Individuals who test positive by a pandemic (H1N1) influenza-specific PCR are considered confirmed cases.

Table 1. Respiratory Laboratory Network (RLN)** Influenza PCR Surveillance Results, Week 39 (Sept. 27 – Oct. 2, 2009)

	Total Flu A Tested	Flu A (% of total)	Seasonal H1 (% of Flu A)	Seasonal H3 (% of Flu A)	Unsubtype-able** (% of Flu A)
All RLN	781	360 (46%)	0 (0%)	0 (0%)	360 (100%)
Northern	245	90 (37%)	0 (0%)	0 (0%)	90 (100%)
Central	359	192 (53%)	0 (0%)	0 (0%)	192 (100%)
Southern	177	78 (44%)	0 (0%)	0 (0%)	78 (100%)

**15 RLN Public Health Laboratories reporting

***At this time, Unsubtypeable Flu A is presumed to be H1N1

United States / Worldwide

- In North America, influenza transmission is geographically widespread and continues to increase marking an unusually early start to the fall and winter influenza season in many countries. The United States has been reporting ILI levels elevated above seasonal baseline for the past month and Mexico has been reporting a high intensity of respiratory diseases for the past 3 weeks.
- Systematic surveillance conducted by the Global Influenza Surveillance Network (GISN) continues to detect sporadic incidence of pandemic (H1N1) 2009 viruses that show resistance to the antiviral oseltamivir. Worldwide, only 31 specimens have shown resistance to oseltamivir.

Figure 1. Percent of school absences due to ILI by disease week, Manteca Unified School District, 2006-2009.

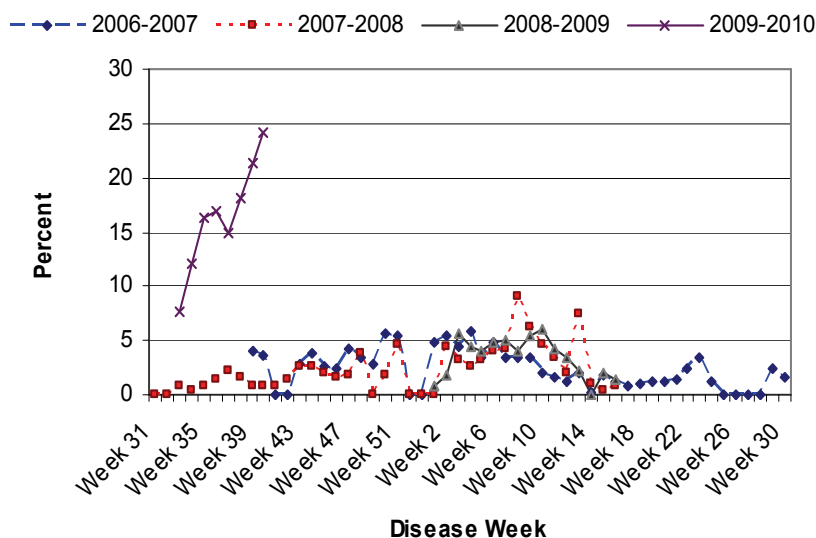


Figure 2. Stockton sentinel provider ILI rates by disease week, 2006-2009

