

**Influenza**

- As of the end of November 2010, influenza activity in CA remained at “sporadic.” Influenza lab detections in CA were declining but detections of other respiratory viruses were increasing, especially RSV.
- In Weeks 46 and 47 combined (11/14/10-11/27/10), the California Department of Public Health (CDPH) received 2 reports of laboratory confirmed influenza patients who were admitted to the ICU and tested positive for influenza B.
- From Weeks 40-47 (10/3/10-11/27/10), the start of this influenza reporting year, a total of 4 severe cases of influenza have been reported to CDPH. Three of these cases were confirmed as influenza B and the other was influenza A/H3. No influenza-associated fatalities have been reported.

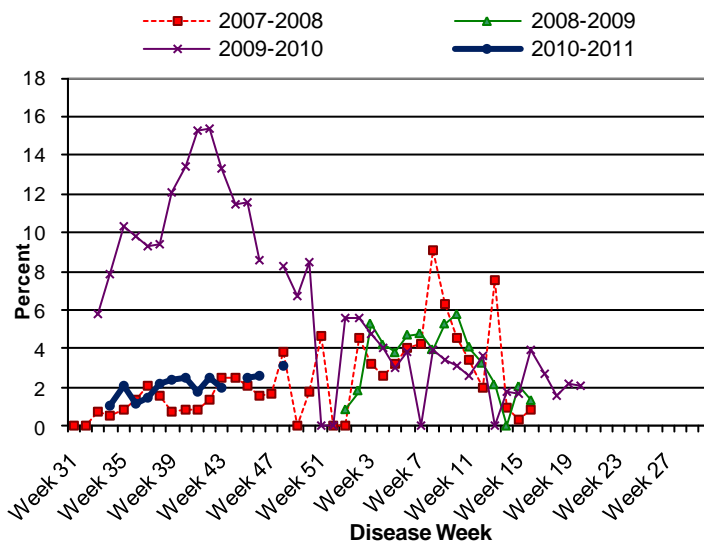
**Pertussis**

- As of 11/30/10, there have been 7,297 cases of confirmed, probable and suspect cases of pertussis reported to the California Department of Public Health (CDPH). The state rate is currently at 18.7 cases per 100,000 persons, the highest incidence rate in over 50 years.
- Disease activity is slowing statewide; however, relatively high number of cases continue to be reported each week.
  - ⇒ Rates are highest in infants <6 months of age (361.9 cases/100,000). Overall rates by race/ethnicity are highest in Hispanics (19.3 cases/100,000) and Whites (15.7 cases/100,000); however, age specific rates indicate that the highest rates are in Hispanic infants <6 months (446.1 cases/100,000)
  - ⇒ Of the 39% of cases with known hospitalization information, 300 (11%) have been hospitalized; 225 (75%) hospitalized cases were infants <6 months of age
  - ⇒ Ten deaths have been reported; 9 (90%) were Hispanic infants. Nine fatalities were infants <2 months of age at disease onset who had not received any doses of pertussis containing vaccine
- As of 11/30/10, SJC PHS has reported 67 cases to CDPH this year for a county incidence rate of 9.25 cases / 100,000. There have been no deaths from pertussis in San Joaquin County.

**Respiratory Syncytial Virus (RSV)**

- RSV infection is one of the most important causes of lower respiratory illness in infants and young children. In the United States, RSV infections generally occur during fall, winter and early spring.
- Sentinel laboratories of the CA Respiratory Laboratory Network (RLN) continue to see an increase in RSV detections. The proportion of RSV positive specimens has increased to 11.5% in Week 47 from 9.5% in Week 46 and 8.2% in Week 45.

**Figure 1. Percent of school absences due to ILI by disease week, Manteca Unified School District, 2007-2011.**



**Figure 2. Epidemic curve of pertussis cases by month of report, San Joaquin County 2009-2010\***

