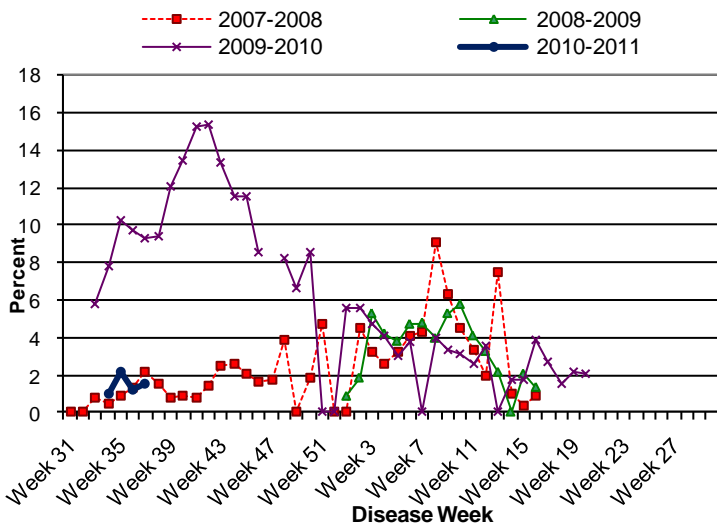


*** The Respiratory Illness Report will replace the weekly Influenza Report for the 2010-2011 flu season***

Influenza

- The CDC reports that flu season in the Southern Hemisphere, where the flu season is ending, has been typical. Globally, H3N2, influenza B, and 2009 H1N1 viruses circulated over the summer, with influenza B predominant during the first part of the summer, the 2009 H1N1 becoming more common after early July, and H3N2 becoming the most commonly identified subtype since late August. CDC officials said they anticipated more H3N2 activity this year, which is often linked to more severe flu infections.
- Influenza activity in CA has been downgraded to "local." Influenza lab detections in CA are declining but detections of other respiratory viruses are increasing, especially RSV.
- The CDC recommends that children 6 months and older and every adult get vaccinated for the flu this year. The U.S. 2010-2011 seasonal influenza vaccine will protect against an H3N2 virus, an influenza B virus and the 2009 H1N1 virus.

Figure 1. Percent of school absences due to ILI by disease week, Manteca Unified School District, 2007-2011.



Pertussis

- As of 10/12/10, there have been 5,658 cases of confirmed, probable and suspect cases of pertussis reported to the California Department of Public Health (CDPH). The state rate is currently at 14.5 cases per 100,000 persons, the highest incidence seen in CA in 50 years.
 - ⇒ Rates are highest in infants <6 months of age (280.6 cases/100,000). Overall rates by race/ethnicity are highest in Hispanics (14.7 cases/100,000) and Whites (11.8 cases/100,000); however, age specific rates indicate that the highest rates are in Hispanic infants <6 months (352.5 cases/100,000)
 - ⇒ Of the 40% of cases with known hospitalization information, 236 (10%) have been hospitalized; 175 (74%) hospitalized cases were infants <6 months of age
 - ⇒ Nine deaths have been reported; 8 (89%) were Hispanic infants. Eight fatalities were infants <2 months of age at disease onset who had not received any doses of pertussis containing vaccine

Figure 2. Stockton sentinel provider ILI rates by disease week, 2007-2011.

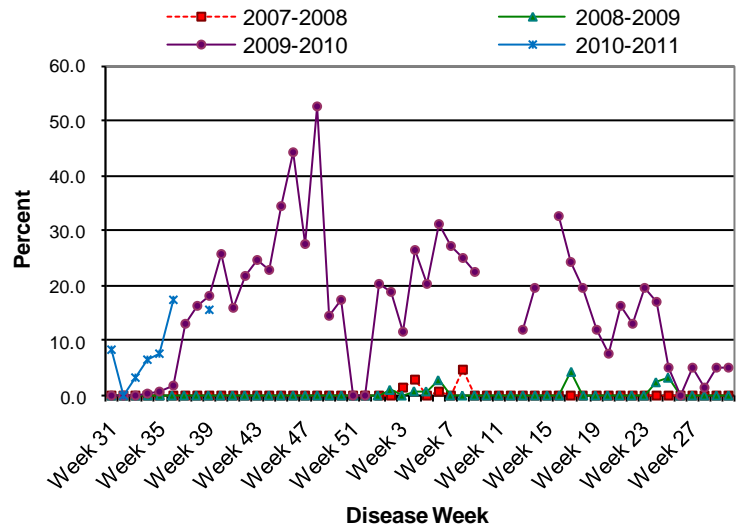
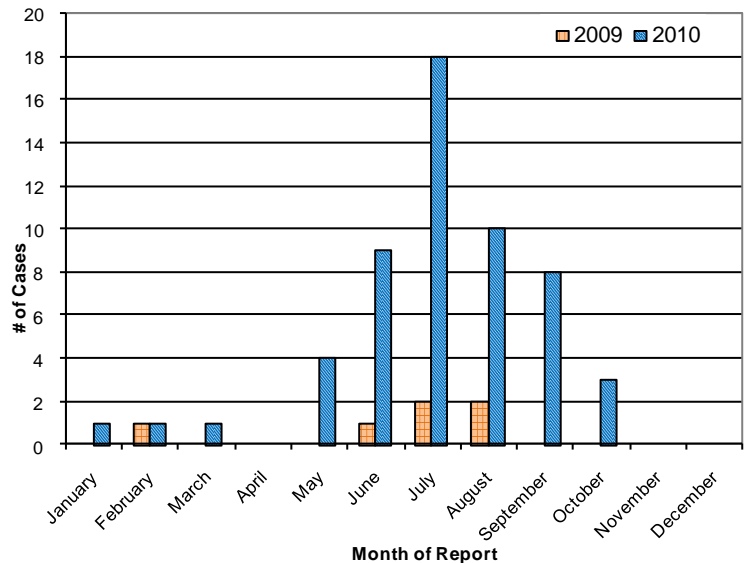


Figure 3. Epidemic curve of pertussis cases by month of report, San Joaquin County 2009-2010*



*October 2010 data is for cases reported as of 10/12/10.

- As of 10/12/10, SJC PHS has reported 55 cases to CDPH this year for a county incidence rate of 7.60 cases / 100,000. There have been no deaths from pertussis in San Joaquin County.